



**INSPIRATION**  
MINING CORP.

**EXPLORING  
SASKATCHEWAN'S  
NEWEST COPPER-GOLD  
DISCOVERY DISTRICT**



CSE: ISP



USA: ISPNF



WKN: A40GPX

JANUARY 2026 INVESTOR PRESENTATION



# Disclaimer

*This presentation is strictly confidential and any disclosure, use, copying and circulation of this presentation is prohibited without the consent of Inspiration Mining Corp. ("The Company").*

*The information contained in this presentation does not constitute or form part of, and should not be construed as, an offer or invitation to subscribe for or purchase the securities discussed herein in any jurisdiction. Neither this presentation nor any part of it shall form the basis of, or be relied upon in connection with any offer, or act as an inducement to enter into any contract or commitment whatsoever. No representation or warranty is given, express or implied, as to the accuracy of the information contained in this presentation.*

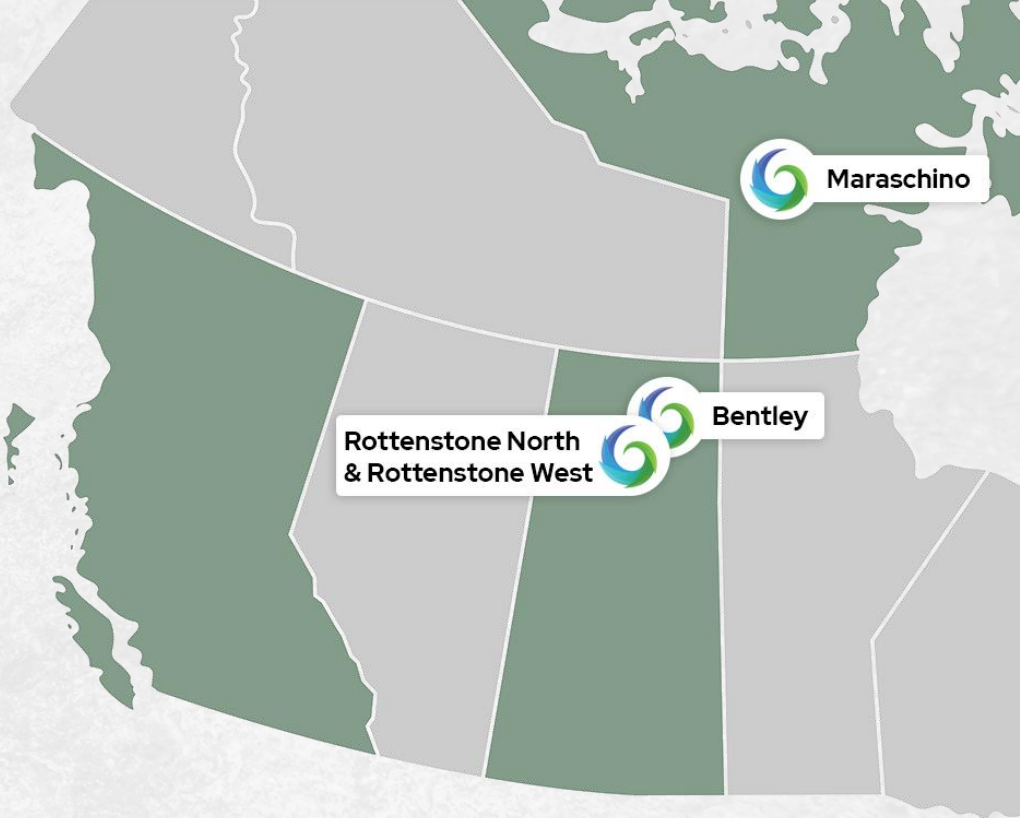
*This presentation contains certain forward-looking statements relating to the business, financial performance and results of the Company and/or the industry in which it operates. Forward-looking statements concern future circumstances and results and other statements that are not historical facts. The forward-looking statements, contained in this presentation, including assumptions, opinions and views of the Company or cited from third party sources are solely opinions and forecasts which are uncertain and subject to risks. A multitude of factors can cause actual events to differ significantly from any anticipated development. Neither the Company nor any such person's, officers or employees guarantee that the assumptions underlying such forward-looking statements are free from errors and omissions nor do any of them accept any responsibility for the future accuracy of the opinions expressed in this presentation or the actual occurrence of the forecasted developments.*

*The information contained herein has been prepared to assist the recipients in making their own evaluation on the Company and does not purport to contain all information that they may desire. In all cases, the recipients should conduct their own investigation and analysis of the Company, its business, prospects, results of operations and financial condition as well as any other information the recipients may deem relevant.*

*The Company does not make any representation or warranty, express or implied, as to the accuracy or completeness of this presentation or of the information contained herein and shall have no liability for the information contained in, or any omissions from, this presentation, nor for any of the written, electronic or oral communications transmitted to the recipients (including without limitation its directors, employees, representatives and advisors).*

*Neither the receipt of this presentation by any recipients, nor any information contained herein or supplied herewith or subsequently communicated in written, electronic or oral form to any person in connection with the contemplated issue of shares in the Company constitutes, or shall be relied upon as constituting, the giving of investment advice to any such person. Each person should make their own independent assessment of the merits of investing in the Company and should consult their own professional advisors. By receiving this presentation, you acknowledge and agree that you will be solely responsible for your own assessment of the market and the market position of the Company and that you will conduct your own analysis and are solely responsible for forming your own opinion of the potential future performance of the Company's business.*

Inspiration Mining Corp. is engaged in the business of mineral exploration and the acquisition of mineral property assets in Canada. Inspiration's flagship projects are the Rottenstone North and Rottenstone West copper-gold projects located in Canada's newest copper-gold exploration camp and contiguous to Ramp Metals' flagship Rottenstone Project. **With less than 40 million shares currently outstanding Inspiration has tremendous leverage to any success in the ground.**



# ROTTENSTONE NORTH+WEST PROJECTS

ROTTENSTONE DOMAIN, SASKATCHEWAN

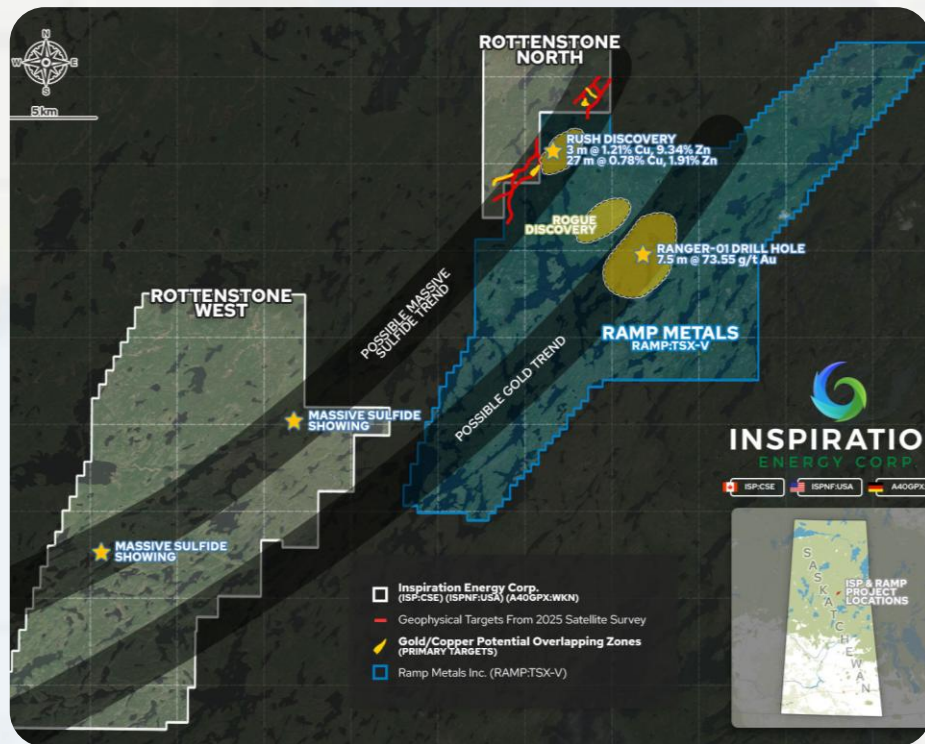


 ROTTENSTONE NORTH

# ROTTENSTONE NORTH+WEST Overview

The Rottenstone North (4,512 ha) & Rottenstone West (31,011 ha) gold and base metal properties are located within the Rottenstone Domain, a regional northeast-southwest geological corridor, that includes the past producing Rottenstone nickel-copper-platinum group elements-gold mine (Ni-Cu-PGE-Au), which from 1965-1968 produced some 26,057 tonnes of high-grade grading 3.28% Ni, 1.83% Cu and 9.63 g/t Pt+Pd+Au (Saskatchewan Mineral Deposits Index #09587).

The Projects are located along the same northeast-southwest trending geological structures that host multiple high-grade showings in the region, including 73.55 g/t Au over 7.5 metres at the Ranger Showing and 1.61% Cu at the Rush VMS discovery (see Ramp's news release dated June 17, 2024). Notably, historical work on the Rottenstone West Project identified multiple massive sulfide occurrences as early as the 1950s. These areas remain untested by modern exploration methods, presenting compelling targets for new discoveries within a top-tier mining jurisdiction.



**Ramp is also targeting a new copper discovery found during a mapping and sampling program (Ramp Metals news release dated Jan 20, 2025) that trends right into Inspiration's contiguous project.**

# Ramp Metals Provides Drilling Update and Confirms Copper-Zinc Mineralization at Rush Target

Ramp Metals Inc. has confirmed copper-zinc (chalcopyrite and sphalerite) mineralization at its Rush target, intersecting semi-massive to massive sulphides in all three initial drill holes. These promising results come from a 1,100-meter-long conductive anomaly, supported by previous high-grade rock and soil sample results. Ramp is expanding the drilling program to 19–20 holes to follow up on this potential volcanogenic massive sulphide (VMS) discovery.



Rush-001 Massive Sulphide Intersection at 61.50–64.69m depth\*



Rush-001 - Discontinuous intersections of semi-massive and massive sulphide from 70.15 -73.5m\*



Rush-002 - Semi-massive and massive sulphide over 2.7m beginning at 69.25m\*

Drill Hole	Depth	Key Intersections	Description
Rush 001	177m	<ul style="list-style-type: none"> <li>12.5–30.0m: Disseminated sulphides</li> <li>31.5–33.25m: Semi-massive sulphides</li> <li><b>61.50–64.69m (3.2m): Massive sulphides</b></li> <li>70.15–73.5m: Discontinuous semi-massive/massive</li> </ul>	Strong mineralization; core visuals released.
Rush 002	123m	<ul style="list-style-type: none"> <li><b>69.25–71.95m (2.7m):</b> Semi-massive to massive sulphides</li> <li>76.0–91.25m: Discontinuous semi-massive</li> </ul>	Continued mineralization below surface anomaly.

## RAMP METALS AUGUST 2025 NEWS RELEASE

# Ramp Metals Confirms VMS Discovery at Rush Target

Ramp Metals Inc. has announced that it has received assay results from 10 of 20 holes drilled during its Rottenstone SW Spring 2025 program, confirming the discovery of a substantial copper-zinc VMS system at the Rush target:

- **Rush-001: 1.21% Cu, 9.34% Zn, 5.59 g/t Ag over 3.53m**
- **Rush-002: 0.44% Cu, 3.44% Zn, 2.84 g/t Ag over 23.70m**
- **Rush-003: 0.76% Cu, 5.42% Zn, 4.47 g/t Ag over 1.5m**
- **Rush-009: 1.29% Cu, 12.38% Zn, 0.28% Pb, 7.47 g/t Ag over 2.55m**
- **Rush-010: 0.78% Cu, 1.91% Zn, 0.53% Pb, 12.71 g/t Ag over 27.00m**

Ramp Metals has received assay results for Rush-001, Rush-002, Rush-003, Rush-004, Rush-009, and Rush-010. To date, all drill holes returned at the Rush target, excluding Rush-004, have encountered significant Cu-Zn-Ag mineralization within multiple lenses, which Ramp considers indicative of a new VMS discovery in Saskatchewan. Rush-001, Rush-002, Rush-003, and Rush-009 were drilled at the initial discovery zone, while Rush-010 tested the NE of the initial discovery zone. This mineralization encountered in Rush-010 represents a 165m step-out from the mineralization encountered in Rush-001, Rush-002, Rush-003 & Rush-009.

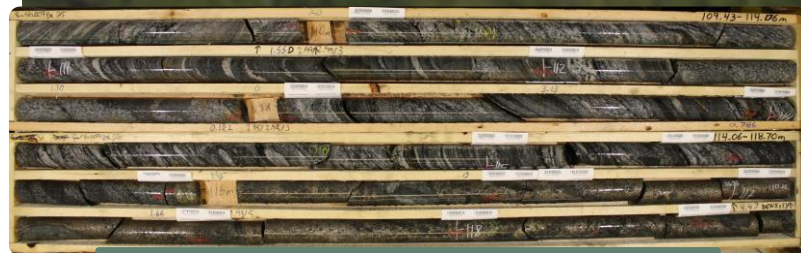
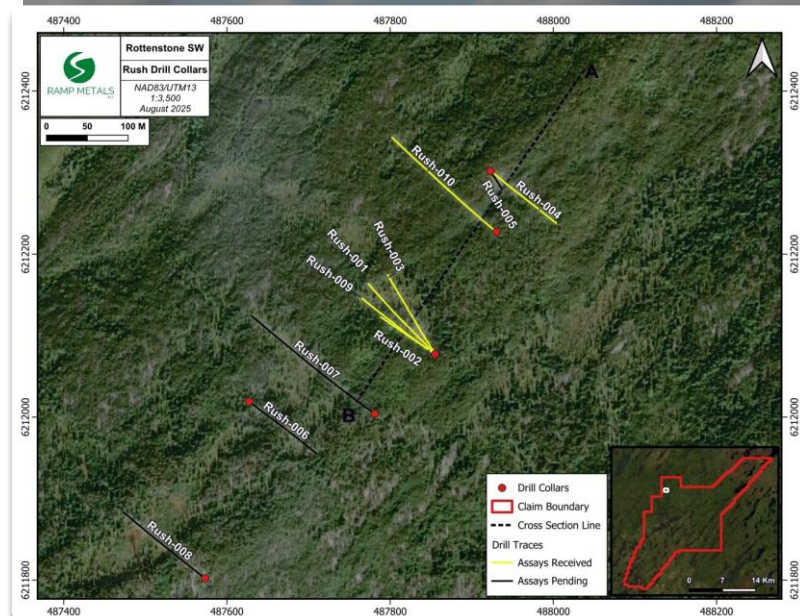


Photo 3: Rush-009 Box 25 & 26; 109.43-118.70m\*



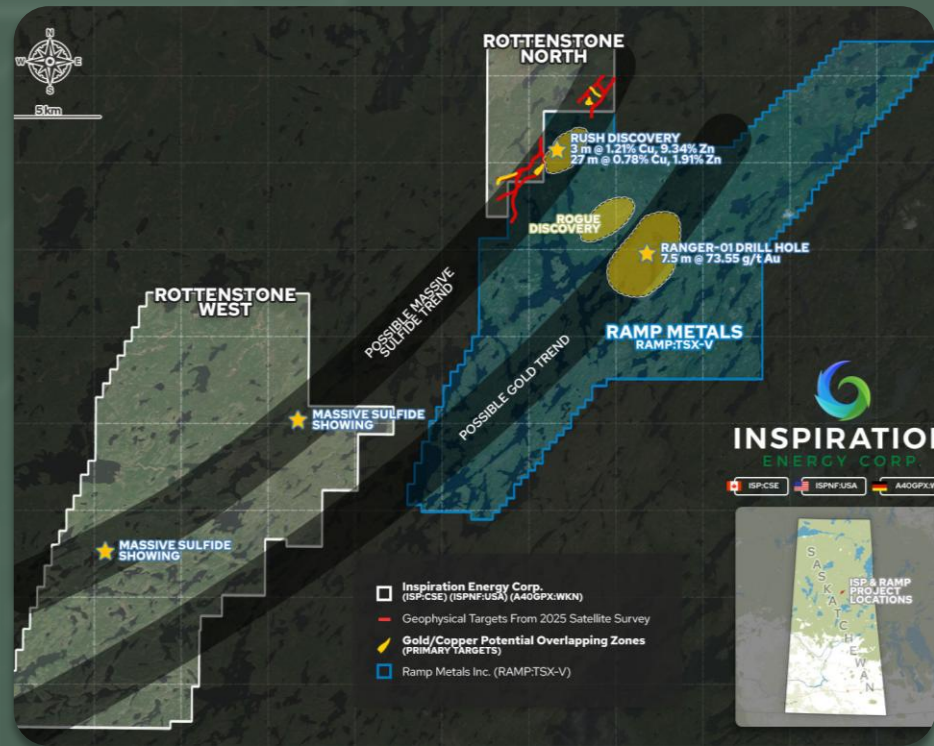
# ROTTENSTONE NORTH+WEST Exploration Plans

Targets defined by a recent AMRT survey are located along trend and parallel to the Rush Discovery corridor, with the strongest anomalies concentrated in the southern part of the Project. Inspiration believes these results represent excellent drill-ready potential and is now formulating plans for a maiden drilling program.

**Drill permits have been acquired for Rottenstone North, with drilling expected to commence early 2026.**

“Targets uncovered by Ramp potentially bodes well for our upcoming commencement of exploration programs. Rottenstone North is at the right address in Saskatchewan, which is one of the most business and mining friendly regions in the world. We look forward to getting boots on the ground, especially considering Ramp Metals’ discovery right at our border.”

– Charles Desjardins, President



# BENTLEY PROJECT

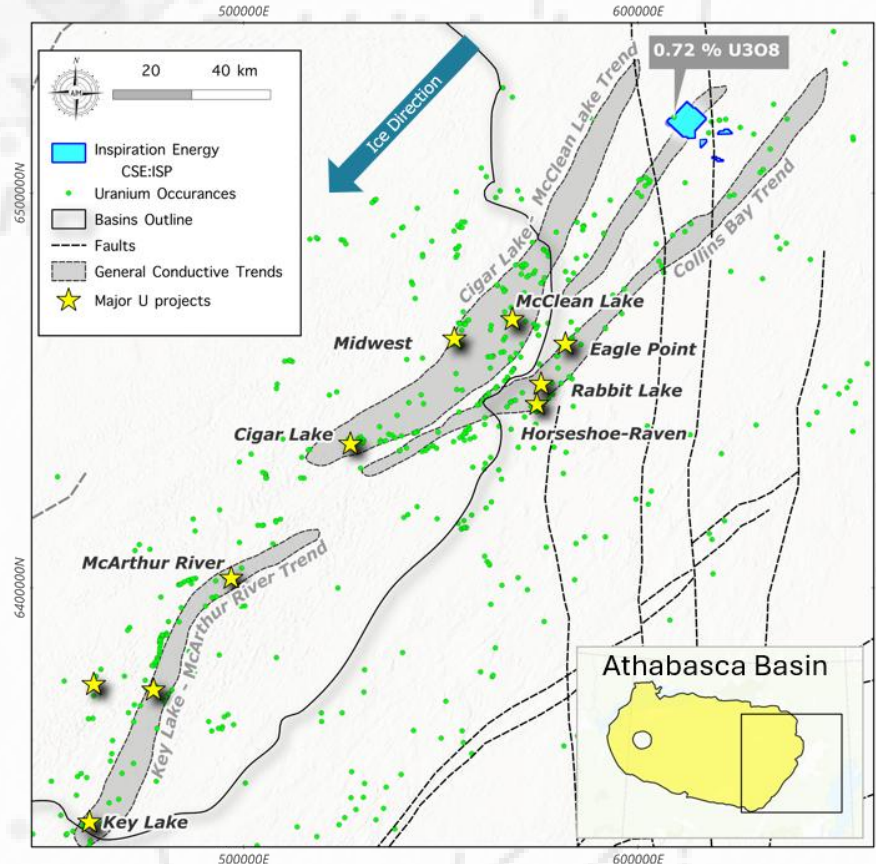
URANIUM – ATHABASCA BASIN, SASKATCHEWAN, CANADA

ATHABASCA  
BASIN

 BENTLEY

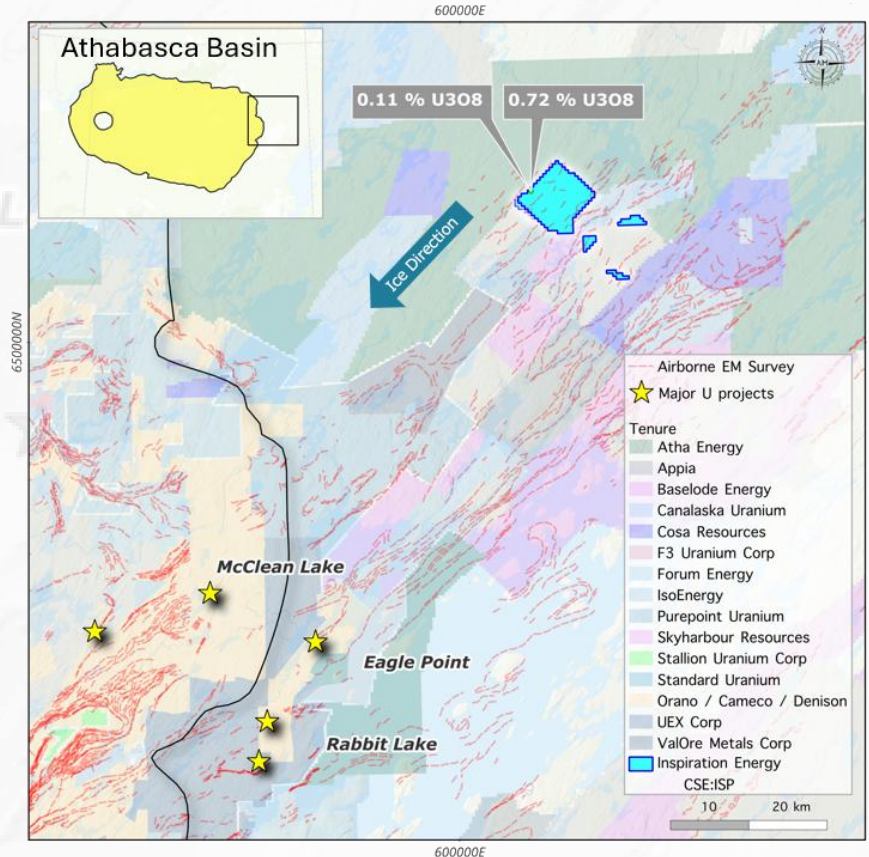
# BENTLEY PROJECT Overview

The Bentley Project is comprised of four mineral licenses encompassing a total land area of ~5,710ha (57km<sup>2</sup>) and is located 75 kilometers northeast of Cameco's Rabbit Lake mine. The Project sits on a potentially parallel structure to the Collins Bay Conductive trend that hosts the Rabbit Lake, Collins Bay and Eagle Point deposits. This environment has the potential for basement-hosted Uranium mineralization analogous to the Eagle Point model.



# BENTLEY PROJECT Exploration Targets

The most notable uranium showing on the property is located at the northern tip of the eastern shoreline of an unnamed small lake, ~15.3km to the east-southeast of Bentley Lake's eastern shore. Mineralization is found within a boulder of migmatitic biotite gneiss, corresponding to radiometric anomaly F-4, with scintillometer readings of 3900 counts per second (cps). Further analysis of the boulder revealed a U3O8 value of 0.11% (0.09% U) and 0.03% ThO2. Another boulder proximal to the first corresponds to radiometric anomaly F-3 and comprises quartzose biotite gneiss, yielding scintillometer readings of 1500 cps. Assay results returned 0.72% U3O8 (0.69% U) and 1.98% ThO2.

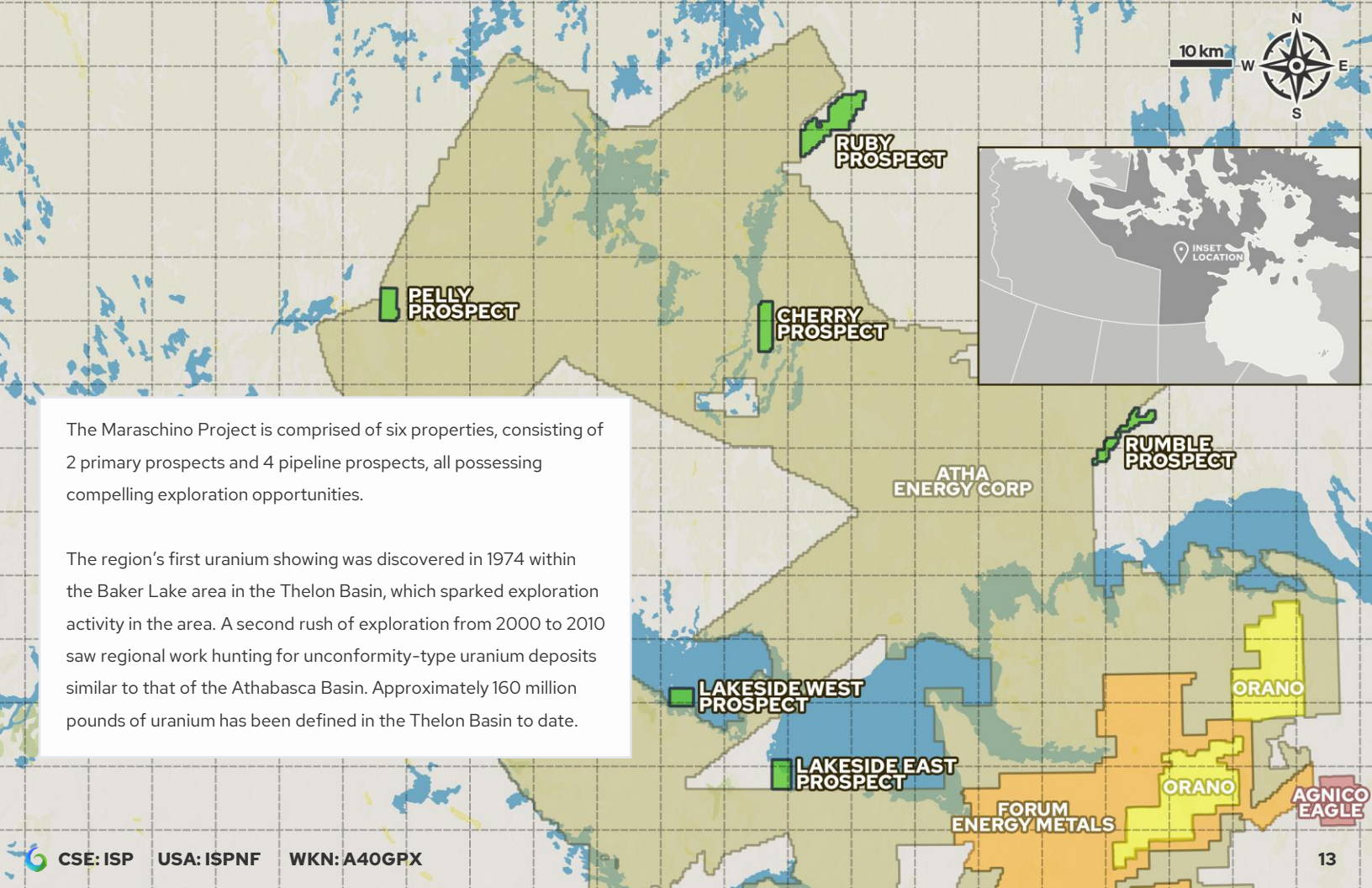


# MARASCHINO PROJECT

URANIUM – THELON BASIN, NUNAVUT, CANADA



MARASCHINO



The Maraschino Project is comprised of six properties, consisting of 2 primary prospects and 4 pipeline prospects, all possessing compelling exploration opportunities.

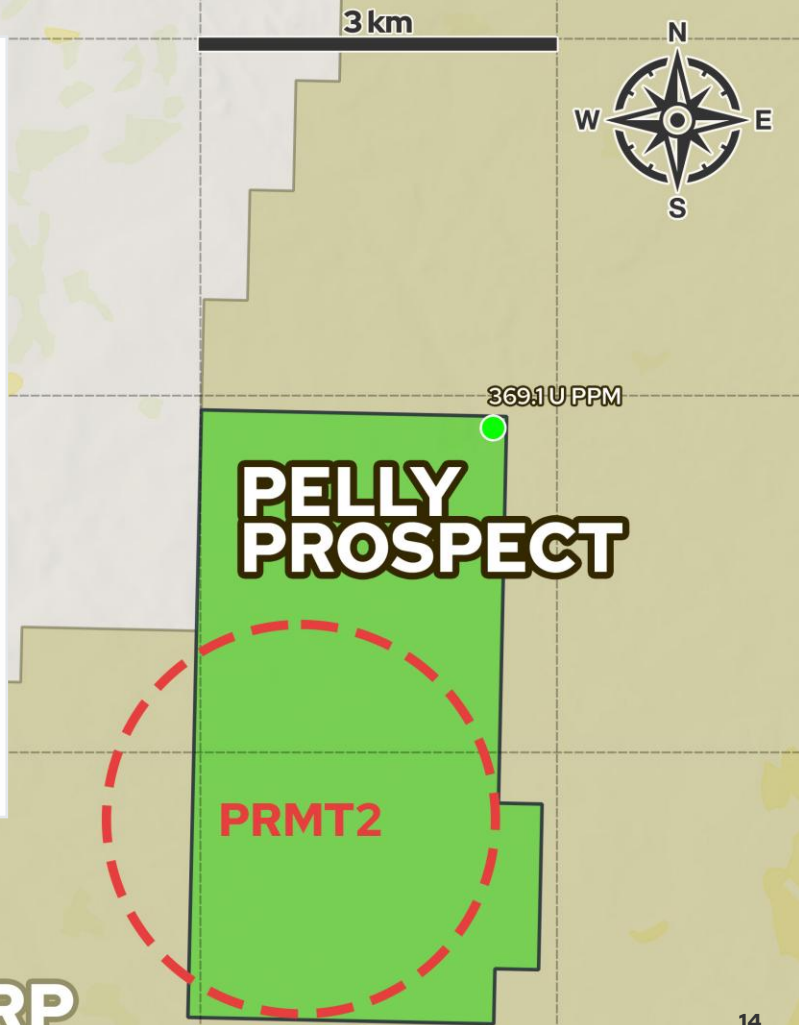
The region's first uranium showing was discovered in 1974 within the Baker Lake area in the Thelon Basin, which sparked exploration activity in the area. A second rush of exploration from 2000 to 2010 saw regional work hunting for unconformity-type uranium deposits similar to that of the Athabasca Basin. Approximately 160 million pounds of uranium has been defined in the Thelon Basin to date.

## PRIMARY PROSPECT A

# Pelly Prospect

The Pelly Prospect comprises 1,366 ha and is located on the Thelon Basin unconformity 145km WNW of Baker Lake. Historic work identified lake sediment geochemical anomalies and uranium showings on the property, with follow-up work identifying VLF basement conductors south of the uranium showings. Limited prospecting was completed following the results of a historic airborne survey, however, historic sampling returned a highlight of 369.1 ppm U. The property encompasses the PRMT2 exploration target.

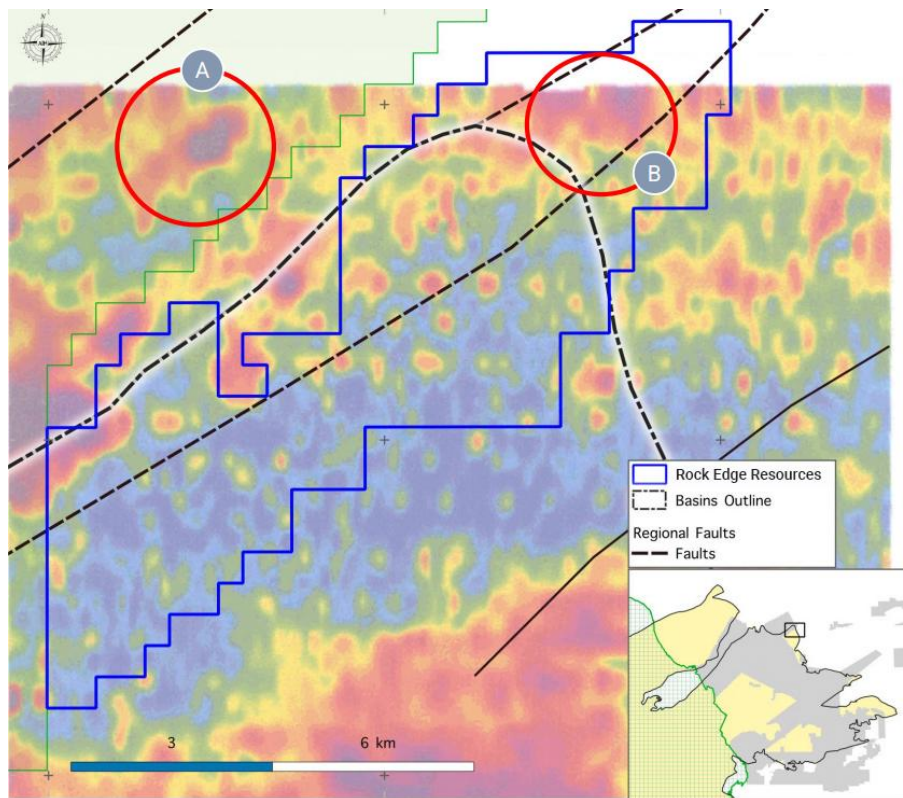
The PRMT2 target lies 225 km from Baker Lake and is an extension of the Amer / McDonald fault system; a contact between the Rae Domain granites and the Thelon Formation of the Dubawnt Supergroup sediments. Clusters of high raw uranium counts (radiometric) are associated with the intersections of interpreted NW-SE and NE-SW structures. An ENE-trending fault contact between the locally outcropping granite and quartzites boulder conglomerate (Whart Gp, Thelon Fm) features boulders that are strongly radioactive altered, bleached and hematized.



## PRIMARY PROSPECT B

# Ruby Prospect

The Ruby Prospect comprises 4,057 ha and is located 170km NW of Baker Lake. The prospect covers the northern edge of the Thelon Basin and is underlain by the Archean Amer group consisting of metapelites. A historic airborne magnetic survey identified a single unusual low resistivity response at the northern edge of the prospect. This response has a NE strike associated with Amer sediment cover but is a well-defined local response that could be alteration within the sediments.



# Meet The Team

## **Charles Desjardins** **CEO & PRESIDENT**

Mr. Desjardins brings more than 30 years of public company experience in the areas of finance and public company management. He is President and CEO of Tandem Capital Group Inc. which was active in the investor relations field during the mid 1980s. Mr. Desjardins was also past president of numerous public mineral exploration and technology companies which traded on the TSX Venture exchange.

## **James Place** **DIRECTOR**

Mr. Place is a professional geoscientist (registered in BC) with over 30 years of experience in the aggregate, heavy construction, and engineering fields. He has worked on all phases of aggregate projects from exploration and permitting through to testing, development, marketing, production and reclamation throughout northern and coastal BC. Mr. Place has held positions with government, engineering, and environmental consulting companies.

## **Lorne McCarthy** **DIRECTOR**

Mr. McCarthy has been involved in the Junior Resource Sector for over 40 years and has served on a number of Public Companies. He was a Realtor in the Vancouver / Lower Mainland for over 30 years and served on the Government Relations Committee for the Greater Vancouver Real Estate Board and has many good relationships with Members of Parliament with both the Provincial Government in BC and the Federal Government in Ottawa.

## **Doug McFaul** **CFO**

Mr. McFaul brings over 30 years of experience in the financial services and capital markets industries. He has extensive experience with the operations of public companies, as well as an in-depth understanding of the regulatory requirements, completion of necessary financial statements, raising capital, and shareholder relations. Doug holds a Bachelor of Business Administration from the University of Alaska Fairbanks.

## **Troy Marfleet** **ADVISOR**

Troy Marfleet, P.Geol., has been working as a geologist in the uranium exploration industry since 2010 and has been a part of the discovery team for three uranium discoveries in the Athabasca and Thelon Basins, with exposure to sandstone and basement-hosted deposit styles. Over the previous 2 years as a Senior Geologist with Axiom Exploration Group, Troy has planned and executed multiple exploration drill programs.

# Exchanges



# Capitalization

Shares Outstanding **42,447,729**

**Management believes that Inspiration is a compelling growth story that merits attention and has significant leverage to any success in the ground. We expect 2026 to be a breakout year for Inspiration.**

- Charles Desjardins, CEO & President

**Inspiration Mining Corp.**

1240-789 W Pender St.

Vancouver, BC, V6C 1H2

✉ [info@inspirationminingcorp.com](mailto:info@inspirationminingcorp.com)

🌐 [inspirationminingcorp.com](http://inspirationminingcorp.com)



**INSPIRATION**  
MINING CORP.

CSE: ISP

USA: ISPNF

WKN: A40GPX